



Friday 13th March 2026

# Newsletter

**A Message From  
Our Senior  
Leadership Team**

This week we have taken part in national science week. This year's theme has been 'Curiosity'. The children have developed their working scientifically skills to investigate a challenge they chose as a class.

Maple - Does the shape of a towers base effect how tall it can be?

Sycamore and Oaks - How does the shape and size of a boat's hull effect how well it floats?

Beech - Do wonky vegetables taste better or worse than 'normal' veggies?

Thank for taking the time to visit and share your child's learning on Friday afternoon.

## **Start of the school day**

We have had a few queries recently so we would like to confirm our school gates open at **8.35am** and close at **8.45am**. All children should be in class ready to start the day at 8.45am. This information can be found on our school website under key information - our school day. Lateness does impact your child's attendance so it is really important you try to get them here on time. Please come and speak to us if you have any concerns.



# Recognition Awards

## Attendance

This week's attendance winner are Beech with 96.22%

Whole school 93.67% this is below the national average

## 100% Attendance

A big shout out to the following students who have 100% attendance this week:

Scarlett L, Casey, Palwasha, Colin, Oskar, Bella, Noorullah, Lottie, Harrison, Ava-Mai, Shona, Grace, Hunter, Sundos, Lucy-Anna, Daisy, Scarlett, Leo, Bonnie, Vanessa, Cohan, Olivia, Kai, Chase, Elsie, James, Lexi-Blu, Nordean, Najmadean, Faith, Michelle, Jessica, Spencer, Sawsan, Chloe, Avery, Lincoln, Lilly, Taluluah, Bradley, Kora, Evana, Oscar, Jackson, Neto, Amanda, Zinachimdi, Claire, Antoni, Abigail, Krishnadiya, Tommy, Grayson, Elodie, Oakley, Skyla, Archie, Avishai, Gold, Dino, Mahydean, Oliver, Lola, Tillie, Ava, Jayansh, Nellie, Atara, Sapphire, Darcie, Adam, Tiana, Esme, Robin, Khalis, Tyreese, Scralett, Alyssa, Rittal and Reemas.

Well done everyone!

## Achiever of the week

Willows - Atara  
Maple - Skylar  
Sycamore - Daisy  
Beech - Reemas  
Oaks - Hunter



# Willows

Willows have been busy this week designing and making boats. This has linked with our story in drawing club, 'The Boy Who Sailed the World'. During Welly Wednesday we searched for natural materials to make mini rafts in preparation for our investigation into which materials are best for floating.

In maths, the children have been getting to grips with the 'part-whole model', finding different compositions of numbers to 10. They all did a great job with this, using the correct vocabulary and explaining their reasoning like true mathematicians.

As ever, it is a joy to see the children happy and busy in their learning. Well done Willows!

# Maple

This week, Maple class have thoroughly enjoyed exploring curiosity as part of our science week!

Each afternoon we have been designing, creating and testing towers with different shaped bases to see which was the strongest. We had discussions about what makes a fair test and how we can improve things when investigating again! In English, we have continued exploring what toys children used to play with years ago and made our very own peg doll! We wrote a set of instructions on how to do this at home too. In maths, year 1 have been exploring numbers to 20 and we have been practising counting on in tens up to 50. In year 2, the children have been consolidating dividing by 2, 5 and 10.

Another fantastic week Maple class, well-done!



# Oaks



What an amazing science week we have had! We have been learning about which material is the best to use for boats. We had a great time building our boats and watching which boat would sink first. In English we have been finishing our story linked to 'Arthur and the Golden Rope'. In Maths we have started looking at fractions, recognising the number of equal parts is represented by the denominator and the number of shaded parts is represented by the numerator. We have also been comparing and ordering fractions with the same denominator. Some amazing challenges have been completed this week. Have a great weekend!



# Sycamore



What a busy week! We had a lovely music lesson on Monday with our incredible music teacher! We then had a super rugby lesson on Thursday with our rugby coach! The Year 4s have made amazing progress with their multiplications and their scores are leaping ahead!

In maths we have continued to have huge success with our fraction's unit! We have been bringing our multiplication and division skills into the unit to find equivalent fractions!

In English, we have continued to think deeply about the journeys and lives of refugees. We have been writing from their perspective with incredible descriptive language.

In science, we had loads of fun exploring the buoyancy of boats, we carried out some fun experiments where we changed their weights in our boats to see how much would go below the water surface.

### Your talk time words this week are:

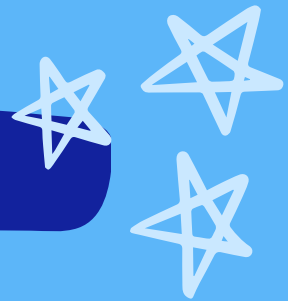
**Flabbergasted** – to be so shocked you are speechless!

**Glare** – a bright light that can make it difficult to see.

**Improper fraction** – a fraction that has the numerator larger than the denominator.

Homework this week is to continue focusing on times tables and spellings.

# Beech



## Mock SATs:

This week, the Y6s had their mock SATs – we have one more week of mocks in May before the real thing. I have sent a letter home to let you know how your child has done, including their marks and how close they are to passing.

At the moment, maths is the area which needs the most revision, especially fractions!

Please ensure that your child is completing pages of their three SATs revision guides little and often; this will really support them consolidating their knowledge and also get them secondary school ready.

## Science week!

We have had an awesome week of being 'curious' about science and the world around us. We have completed research, planning, investigations and bar graphs of our data relating to the appearance of food – acting as real scientists!

Also, this week, we have been learning about decimals in maths, and have been continuing our book 'The Darkest Dark in English.

## Notices:

-Homework is due in Fridays for Y5 and Y6

-Times tables need practising little and often on TTRS – easter egg prizes at the end of term for our top scorers!



# Menu



## WEEK 2

W/C: MONDAY 10TH NOV, 1ST DEC, 5TH JAN, 26TH JAN, 23RD FEB, 16TH MARCH

MONDAY	TUESDAY	WEDNESDAY	THURSDAY	FRIDAY
<p><b>CHOICE 1 - H</b> Crispy chicken served with seasoned wedges and veg Allergens: Glu Wh Bar E m/c So Mi</p>	<p><b>CHOICE 1 - H, W</b> Creamy chicken and tomato pasta bake served with veg Allergens: Glu Wh Mi</p>	<p><b>CHOICE 1 - H, W, V</b> Cheese and tomato pizza served with potato wedges and veg Allergens: Glu, Wh, So, Mi</p>	<p><b>CHOICE 1 - H</b> Roast gammon with roast potatoes, Yorkshire pudding, veg and gravy Allergens: Glu Wh E Mi</p>	<p><b>CHOICE 1 - W</b> Salmon bites served with fresh chips or wholewheat pasta and veg Allergens: Glu, Wh, F</p>
<p><b>CHOICE 2 - H, V</b> Homemade vegetable moussaka served with veg Allergens: Glu Wh Mi Ce Mu So</p>	<p><b>CHOICE 2 - H, W, V, VE</b> Vegetable curry and rice served with veg</p>	<p><b>CHOICE 2 - H, V, VE</b> Mexican vegan cheese and bean quesadilla served with wedges and veg Allergens: Glu Wh O</p>	<p><b>CHOICE 2 - H, V, VE</b> Vegetarian sausage with vegetable casserole and roast potatoes Allergens: Glu Wh Ce m/c Bar</p>	<p><b>CHOICE 2 - H, W, V</b> Cheese wheels with fresh chips or wholewheat pasta and veg Allergens: Glu Wh Mi Mu</p>

SELECTION OF JACKET POTATOES ARE AVAILABLE EACH DAY: BEANS / CHEESE (MI) / TUNA MAYONNAISE (F S)  
HOT PANINI: CHOOSE FROM CHEESE & TOMATO OR HAM & TOMATO SERVED WITH TORTILLA CHIPS AND VEG  
(For the full allergy information, please refer to our webpage or check with your school)

<p><b>DESSERT - H, V, W</b> Blueberry cake Allergens: Glu Wh E Bar</p>	<p><b>DESSERT - H, V, VE</b> Cornish fairings biscuit with fruit Allergens: Glu Wh</p>	<p><b>DESSERT - H, V, VE</b> Fruit platter</p>	<p><b>DESSERT - H, V, W</b> Banana cookies Allergens: Glu Wh E</p>	<p><b>DESSERT - H, V, W</b> Vanilla and chocolate marble cake with custard Allergens: Glu Wh E Mi m/c Bar</p>
--	--	--	--	---

AVAILABLE EVERY DAY: FRESH SALAD / FRESH FRUIT AND YOGHURT

Fresh fruit, local Westcountry yoghurt available daily. Fresh drinking water is available throughout the lunch time period.  
All meals served with seasonal vegetables. Chicken alternatives to beef and pork upon request. One meat free day.  
H = HOME-MADE IN THE KITCHEN, W = WHOLE WHEAT INGREDIENTS, VE = VEGAN DISH, V = VEGETARIAN

Allergen Key: Gluten (Glu), Barley (Bar), Wheat (Wh), Oats (O), Rye (R), Soya (So), Sulphites (Su), Sesame (Se), Peanuts (P), Mustard (Mu), Molluscs (Mo), Milk (M), Nuts (N), Eggs (E), Crustaceans (C), Celery (Ce), Fish (F), Lupin (L), m/c May Contain



Food Standards Agency food.gov.uk/ratings

This scheme is operated in partnership with your local authority

### FOOD HYGIENE RATING

0 1 2 3 4 **5**

VERY GOOD



# COMMUNITY EVENTS



## Children, Young People and Families Neurodiversity Wellbeing Team

We offer a free, confidential advice line for children, young people and families on the Neurodiversity Pathway in Plymouth and Devon.

**Advice can include:**

- Anxiety
- Diet
- Friendships
- Sleep
- Linking with other teams and services in your area
- School difficulties
- Support strategies



 **Contact us: 01752 435404** Monday - Friday, 09:00-17:00

**Have your say:**  
Share feedback to help us improve our services. Use the QR code to complete the questionnaire.



*We support people to lead independent, healthy lives*

## Absence

If your child is off school please call the school number 01752 567681 and press 2 to report the absence. Can this be done first thing in the morning

## Absence Request

We have had a lot of Absence Request and students being taken out of school for holidays. Absence request forms must be filled in 20 school days in advance. In exceptional circumstances this will be authorised. Please see the link below for further information from PCC website

<https://www.plymouth.gov.uk/school-attendance-absence-and-penalty-notice>

## Clubs

Breakfast club - starts at 7:45am and cost £2 session. You must book through the Arbor app by 11:00 pm the day before.

After school club - Monday to Friday 3:15pm to 5pm, session are £5 per student. You must book through the Arbor app by 11:00 am on the day.



## Contact

If you need to contact Phone number:

01752 567681

Website address:

[www.marlboroughacademy.org](http://www.marlboroughacademy.org)

Email address:

[reception@marlboroughacademy.org](mailto:reception@marlboroughacademy.org)

# Dates for Diary

Monday 23<sup>rd</sup> March - Babcock whole school event.

Wednesday 20<sup>th</sup> May - Reception class Teddy Bears Picnic Event.

Thursday 21<sup>st</sup> May - Year 5 Widening Horizons Trip to Arts University

## Marlborough Primary Academy term dates 2025 / 2026

September 25					October 25					November 25					December 25								
Monday	1	8	15	22	29	Monday	6	13	20	27	Monday	3	10	17	24	Monday	1	8	15	22	29		
Tuesday	2	9	16	23	30	Tuesday	7	14	21	28	Tuesday	4	11	18	25	Tuesday	2	9	16	23	30		
Wednesday	3	10	17	24		Wednesday	1	8	15	22	29	Wednesday	5	12	19	26	Wednesday	3	10	17	24	31	
Thursday	4	11	18	25		Thursday	2	9	16	23	30	Thursday	6	13	20	27	Thursday	4	11	18	25		
Friday	5	12	19	26		Friday	3	10	17	24	31	Friday	7	14	21	28	Friday	5	12	19	26		
January 26					February 26					March 26					April 26								
Monday	5	12	19	26		Monday	2	9	16	23		Monday	2	9	16	23	30	Monday	6	13	20	27	
Tuesday	6	13	20	27		Tuesday	3	10	17	24		Tuesday	3	10	17	24	31	Tuesday	7	14	21	28	
Wednesday	7	14	21	28		Wednesday	4	11	18	25		Wednesday	4	11	18	25		Wednesday	1	8	15	22	29
Thursday	1	8	15	22	29	Thursday	5	12	19	26		Thursday	5	12	19	26		Thursday	2	9	16	23	30
Friday	2	9	16	23	30	Friday	6	13	20	27		Friday	6	13	20	27		Friday	3	10	17	24	31
May 26					June 26					July 26					August 26								
Monday	4	11	18	25		Monday	1	8	15	22	29	Monday	6	13	20	27		Monday	3	10	17	24	31
Tuesday	5	12	19	26		Tuesday	2	9	16	23	30	Tuesday	7	14	21	28		Tuesday	4	11	18	25	
Wednesday	6	13	20	27		Wednesday	3	10	17	24		Wednesday	1	8	15	22	29	Wednesday	5	12	19	26	
Thursday	7	14	21	28		Thursday	4	11	18	25		Thursday	2	9	16	23	30	Thursday	6	13	20	27	
Friday	1	8	15	22	29	Friday	5	12	19	26		Friday	3	10	17	24	31	Friday	7	14	21	28	

Term	No. of Pupil Days
Autumn 1	37
Autumn 2	34
Spring 1	29
Spring 2	29
Summer 1	24
Summer 2	35
Total	188

Public Holiday     
  School Holiday     
  School Inset Day

## Marlborough Primary Academy term dates 2026 / 2027

September 26					October 26					November 26					December 26								
Monday	7	14	21	28	Monday	5	12	19	26	Monday	2	9	16	23	30	Monday	7	14	21	28			
Tuesday	1	8	15	22	29	Tuesday	6	13	20	27	Tuesday	3	10	17	24	Tuesday	1	8	15	22	29		
Wednesday	2	9	16	23	30	Wednesday	7	14	21	28	Wednesday	4	11	18	25	Wednesday	2	9	16	23	30		
Thursday	3	10	17	24		Thursday	1	8	15	22	29	Thursday	5	12	19	26	Thursday	3	10	17	24	31	
Friday	4	11	18	25		Friday	2	9	16	23	30	Friday	6	13	20	27	Friday	4	11	18	25		
January 27					February 27					March 27					April 27								
Monday	4	11	18	25		Monday	1	8	15	22		Monday	1	8	15	22	29	Monday	5	12	19	26	
Tuesday	5	12	19	26		Tuesday	2	9	16	23		Tuesday	2	9	16	23	30	Tuesday	6	13	20	27	
Wednesday	6	13	20	27		Wednesday	3	10	17	24		Wednesday	3	10	17	24	31	Wednesday	7	14	21	28	
Thursday	7	14	21	28		Thursday	4	11	18	25		Thursday	4	11	18	25		Thursday	1	8	15	22	29
Friday	1	8	15	22	29	Friday	5	12	19	26		Friday	5	12	19	26		Friday	2	9	16	23	30
May 27					June 27					July 27					August 27								
Monday	3	10	17	24	31	Monday	7	14	21	28	Monday	5	12	19	26		Monday	2	9	16	23	30	
Tuesday	4	11	18	25		Tuesday	1	8	15	22	29	Tuesday	6	13	20	27		Tuesday	3	10	17	24	31
Wednesday	5	12	19	26		Wednesday	2	9	16	23	30	Wednesday	7	14	21	28		Wednesday	4	11	18	25	
Thursday	6	13	20	27		Thursday	3	10	17	24		Thursday	1	8	15	22	29	Thursday	5	12	19	26	
Friday	7	14	21	28		Friday	4	11	18	25		Friday	2	9	16	23	30	Friday	6	13	20	27	

Term	No. of Pupil Days
Autumn 1	37
Autumn 2	35
Spring 1	29
Spring 2	24
Summer 1	34
Summer 2	36
Total	195

Public Holiday     
  School Holiday     
  School Inset Day