



Friday 23rd January 2026

# Newsletter

## A Message From Our Head Teacher

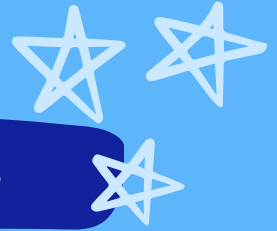
The year six pupils have been working really hard this week to demonstrate their progress through the year six curriculum. The students completed some practise SATs assessments; demonstrating their knowledge in reading, writing and maths throughout the week. The children's attitudes were brilliant and some of the Y6 cohort have made exceptional progress. We practise these tests regularly thought year six – it enables the pupils to feel confident and comfortable before the actual assessments in May. Well done to Y6 for engaging so well with the tests – also well done to the teaching team for supporting the pupils so well.

We are always trying to ensure that children, and our parents and carers, understand the need for good attendance at school. If children are not in school, they cannot learn. When children miss lessons, they feel more unsettled when they return and this can lead to further absence and children then falling behind with learning. This year we have a BIG attendance end of year prize – all children with a terms' worth of 100% attendance will get a raffle ticket, and a winner will be chosen at the end of the year. We are currently deciding (with the help of Pupil Parliament) what the prize should be and, at the moment, we are considering a Smyths Voucher to the value of £100 or a bike. Watch this space for more information. Starting next week, all children with 100% attendance will also take part in a mini-affle and win a small prize if their name is drawn. Please support us in bringing your child to school on time, every day unless they are too poorly to attend.





## Willows

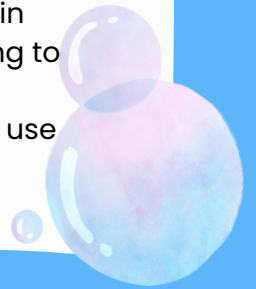


Willows have had a super week. The foundation children have been focusing much of their learning on the story 'Suddenly'. They have made predictions on the text, created new characters and new adventures.

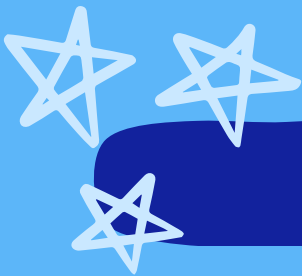
In maths, they have been ordering numbers and counting on from a given number to 10. They have shown great enthusiasm and purpose in their maths learning. They have mastered subitising using dice faces and recognising numbers and the matching numicon.

We have had a lot of fun with bubble painting this week. This has resulted in much experimentation and exploration of mixing paint and bubbles and trying to blow bubbly paint through shapes.

Year 1 children have been exploring the 'Great Fire of London' text, learning to use new vocabulary within their discussions, as well as looking at timelines.



## Maple



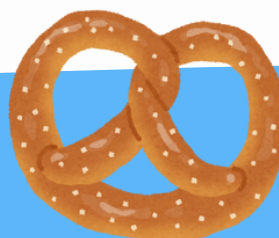
Another great week in Maple! We have been writing our own eye-witness reports as if we were escaping from the Great Fire in London! Some amazing vocabulary and expression used by the children.

We continue to explore money in maths and have been making the same amounts in different ways. We have been working practically to make the amounts and identify the value of each coin and note.

We also had another great session from our visitors from the Mental Health Support Team exploring how what we think in different situations is called 'self talk' and that this can impact the way we feel and behave.

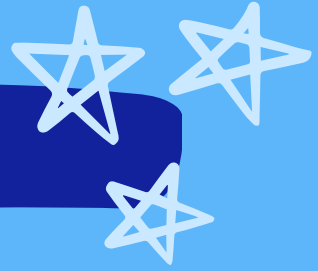
In History we continue to explore the Great Fire of London and began to explore timelines and how this helps us to order things chronologically.

A very exciting week in D.T - the children will have been able to taste different types of bread and test them against their own criteria to give them a taste rating from 0-10!





# Oaks



We have had a busy week in English, we have been making leaflets about Plymouth, we have enjoyed finding out about Plymouth Hoe, The Barbican and the National Aquarium.

In maths, we have been multiplying a 2-digit number by a 1-digit number and exchanging. We have found it challenging, but we are getting there.

In science, we have been predicting how magnets can attract and repel each other depending on which poles are facing.

In computing, we learnt to code and remix it, then we asked our friend to play the games we made.



# Sycamore

Sycamore have had a busy week this week!

We had our incredible music teacher back again this week, we have continued to learn our chords, ready to put music to poetry next week. We were also very excited to welcome Plymouth Albion back into school. We have one of their talented players supporting us for the next few weeks!

In maths, we have brought our multiplication and division unit to an end. The children have been working so hard, and they have made great progress!

In English, we began the week looking at our characters and thinking about how they might be feeling and what they might say to each other. We ended the week with some poetry. We had a lovely time exploring different styles of poetry and writing some beautiful poems.

In geography, we have been looking at earthquakes this week! We made some great connections between earthquakes and volcanoes.

In science, we had a really exciting experiment this week. We explored the classroom testing various objects to see if they were magnetic. We then discussed what properties of the objects made them magnetic.

## Your talk time words this week are:

**Tectonic plates** – they make up the Earth's surface and are always moving.

**Cautiously** – to do something carefully.

**Exchange** – to swap one thing for something of the same value.



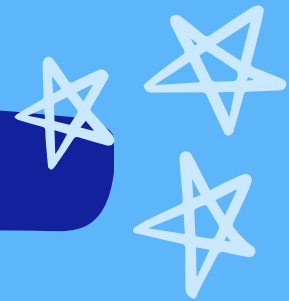
## Homework:

**English** – this week's spelling pattern.

**Maths** – Multiplication and division flashback.



# Beech



This week, Y6 have been doing their mock SATs and have been working really hard! The real SATs are in May and if they keep up their motivation to improve, they are going to do well.

These tests are important and ensure they are ready for all their learning in secondary school. If you would like to support your child, please ensure they are keeping up with their homework, and are using SATs bootcamp regularly. This is a paid for website with tutorial videos, revision sessions and practice tests to help your child plug in gaps in their learning or revise previously taught subjects.

Next week, the Y5s have their assessments. They also have access to SATs bootcamp; just as a reminder, SATs test learning from all key stage year groups so it is also a great revision tool for them.

In maths, we have been learning how to use long division. In English, we have been reading our book: 'Arthur and the Golden Rope', and have been creating expanded noun phrases about the story. In science, we learned about asexual reproduction by planted some spider plants, onions and garlic!



## Notices:

Y5 assessments next week

Contact me if you would like to know your child's mock SATs result  
Y5 'Widening Horizons' trip on Wednesday to EE (buffet breakfast included)  
PE on Friday



# Menu

CATER<sup>ed</sup>

## WEEK 2

W/C: MONDAY 10TH NOV, 1ST DEC, 5TH JAN, 26TH JAN, 23RD FEB, 16TH MARCH

MONDAY	TUESDAY	WEDNESDAY	THURSDAY	FRIDAY
<p><b>CHOICE 1 - H</b> Crispy chicken served with seasoned wedges and veg Allergens: Glu Wh Bar E m/c So Mi</p>	<p><b>CHOICE 1 - H, W</b> Creamy chicken and tomato pasta bake served with veg Allergens: Glu Wh Mi</p>	<p><b>CHOICE 1 - H, W, V</b> Cheese and tomato pizza served with potato wedges and veg Allergens: Glu, Wh, So, Mi</p>	<p><b>CHOICE 1 - H</b> Roast gammon with roast potatoes, Yorkshire pudding, veg and gravy Allergens: Glu Wh E Mi</p>	<p><b>CHOICE 1 - W</b> Salmon bites served with fresh chips or wholewheat pasta and veg Allergens: Glu, Wh, F</p>
<p><b>CHOICE 2 - H, V</b> Homemade vegetable moussaka served with veg Allergens: Glu Wh Mi Ce Mu So</p>	<p><b>CHOICE 2 - H, W, V, VE</b> Vegetable curry and rice served with veg</p>	<p><b>CHOICE 2 - H, V, VE</b> Mexican vegan cheese and bean quesadilla served with wedges and veg Allergens: Glu Wh O</p>	<p><b>CHOICE 2 - H, V, VE</b> Vegetarian sausage with vegetable casserole and roast potatoes Allergens: Glu Wh Ce m/c Bar</p>	<p><b>CHOICE 2 - H, W, V</b> Cheese wheels with fresh chips or wholewheat pasta and veg Allergens: Glu Wh Mi Mu</p>
<p>SELECTION OF JACKET POTATOES ARE AVAILABLE EACH DAY: BEANS / CHEESE (MI) / TUNA MAYONNAISE (F S) HOT PANINI: CHOOSE FROM CHEESE &amp; TOMATO OR HAM &amp; TOMATO SERVED WITH TORTILLA CHIPS AND VEG (For the full allergy information, please refer to our webpage or check with your school)</p>				
<p><b>DESSERT - H, V, W</b> Blueberry cake Allergens: Glu Wh E Bar</p>	<p><b>DESSERT - H, V, VE</b> Cornish fairings biscuit with fruit Allergens: Glu Wh</p>	<p><b>DESSERT - H, V, VE</b> Fruit platter</p>	<p><b>DESSERT - H, V, W</b> Banana cookies Allergens: Glu Wh E</p>	<p><b>DESSERT - H, V, W</b> Vanilla and chocolate marble cake with custard Allergens: Glu Wh E Mi m/c Bar</p>

AVAILABLE EVERY DAY: FRESH SALAD / FRESH FRUIT AND YOGHURT

Fresh fruit, local Westcountry yoghurt available daily. Fresh drinking water is available throughout the lunch time period.  
All meals served with seasonal vegetables. Chicken alternatives to beef and pork upon request. One meat free day.  
H = HOME-MADE IN THE KITCHEN, W = WHOLE WHEAT INGREDIENTS, VE = VEGAN DISH, V = VEGETARIAN.  
Allergen Key: Gluten (Gl), Barley (Bar), Wheat (Wh), Oats (O), Rye (R), Soya (So), Substitutes (Su), Sesame (Se), Peanuts (P), Mustard (Mu), Molluscs (Mo), Milk (M), Nuts (N), Eggs (E), Crustaceans (C), Celery (Ce), Fish (F), Lupin (L), m/c May Contain

= Climate Friendly

**DID YOU KNOW**  
You can have mixed or brown rice instead of potatoes!  
Tilda



CATER<sup>ed</sup>

# INTERNATIONAL LEGO DAY

Wednesday 28th January

Lego pepperoni pizza

♪ Everything Is Awesome ♪  
mediterranean vegetable tart

Crispy crunch brick bites

*(For allergy info, please speak to the kitchen or school)*



## INTERNATIONAL LEGO DAY ACTIVITY

To celebrate International Lego Day we are asking the children to draw a Lego picture to bring into school which will be used as a display on Wednesday 28<sup>th</sup> January. The children can also make a Lego model but we ask these are not brought in. Please take a picture of the models and send them into school. If they show all drawings, pictures and photographs to Dani in the kitchen she will reward them with a B Buck.



### Y.I.P.P.E.E Meetups

for **Young Independent Proud Parents Encouraging Each other**  
(for parents and parents to be under 25 years old)

WEDNESDAY 7<sup>th</sup> JANUARY  
1.30 - 3PM

FREE SOFT PLAY AT YMCA OCEAN CITY SOFT PLAY  
YMCA, Honicknowle Lane, Plymouth. PL5 3NG

WEDNESDAY 14<sup>th</sup> JANUARY  
1.30 - 3PM

FREE SOFT PLAY AT YMCA OCEAN CITY SOFT PLAY  
YMCA, Honicknowle Lane, Plymouth. PL5 3NG

*Remember waterproofs, warm clothes and wellies where needed!*

WEDNESDAY 21<sup>st</sup> JANUARY  
1 - 2.30 pm

THE GRUFFALO'S CHILD TRAIL AT SALTRAM (FREE)  
Meet at the Duck pond

What 3 Words location: [bounced.voted.favour](https://www.bounced.voted.favour)

TUESDAY 27<sup>th</sup> JANUARY  
1.15 - 2.30PM

FREE SOFT PLAY AND DROP IN  
Discovery Cafe, Central Methodist Church Hall,  
Eastlake Street, Plymouth City Centre. PL1 1BA

WEDNESDAY 4<sup>th</sup> FEBRUARY  
1 - 2.30PM

STORYTIME AT THE NATIONAL MARINE AQUARIUM  
(ADMISSION OR VALID ANNUAL PASS REQUIRED)  
National Marine Aquarium, The Rope Walk Beech  
Avenue, Plymouth. PL4 0QQ

WEDNESDAY 11<sup>th</sup> FEBRUARY  
1.30 - 3PM

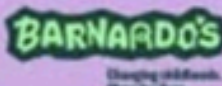
NATIONAL TEDDY DAY  
BRING A PICNIC AND YOUR TEDDY FOR  
FREE SOFT PLAY AND TEDDY BEARS PICNIC AT OCEAN CITY SOFT PLAY  
YMCA, Honicknowle Lane, Plymouth, PL5 3NG



For further information call/text Sal: 07738119697 & Jess: 07522619076

Also check out our [Facebook page](#) for any updates,  
including changes or cancellations due to weather conditions

Plymouth Family Hubs working in partnership with...



**FREE**  
PLEASE **BOOK**  
BY CALLING A  
FAMILY HUB

# PLYMOUTH FAMILY HUBS

# READY, STEADY, CHAT!



**8 SESSIONS DESIGNED TO SUPPORT  
YOUR CHILD'S SPEECH AND  
LANGUAGE DEVELOPMENT!  
18 MONTHS-4 YEARS**

**Efford Library - Wednesdays from 21<sup>st</sup> Jan-18th  
March 2026 930-1030am**

**St. Budeaux Library - Thursdays from 22nd Jan-  
19th March 2026 930-1030am**  
No session in half term

**Activities include:**

- ✓ Arts and crafts
- ✓ Singing
- ✓ Games and activities
- ✓ Storytelling
- ✓ Talk time and ideas for home

**SCAN ME**



**Plymouth Family Hubs working in partnership with...**





# MUFTI DAY

**Friday 30<sup>th</sup> January 2026**

**In honour of NSPCC Number Day we are holding a mufti day on Friday 30th January. We are asking for cake donations please instead of money. Please remember any cake donations will need to be nut free.**



# MUFTI DAY


**Friday 13th February 2026**

**In honour of children's mental health week we are holding a mufti day on Friday 13<sup>th</sup> February. No donations are required and we want the children to dress in whatever makes them feel comfortable.**






# NSPCC ROCKS



**FRIDAY 6 FEBRUARY  
7:30AM TO 7:30PM**



**PLAY IN ANY  
GAME TYPE!**

**1HR TIME LIMIT  
PER PERSON!**



**WINNING CLASS WILL HAVE THE  
HIGHEST NUMBER OF CORRECT  
ANSWERS PER STUDENT!**



**TIMES TABLES  
ROCK STARS**

## Absence

If your child is off school please call the school number 01752 567681 and press 2 to report the absence. Can this be done first thing in the morning

## Absence Request

We have had a lot of Absence Request and students being taken out of school for holidays. Absence request forms must be filled in 20 school days in advance. In exceptional circumstances this will be authorised. Please see the link below for further information from PCC website

<https://www.plymouth.gov.uk/school-attendance-absence-and-penalty-notice>

## Clubs

Breakfast club - starts at 7:45am and cost £2 session. You must book through the Arbor app by 11:00 pm the day before.

After school club - Monday to Friday 3:15pm to 5pm, session are £5 per student. You must book through the Arbor app by 11:00 am on the day.



## Contact

If you need to contact Phone number:

01752 567681

Website address:

[www.marlboroughacademy.org](http://www.marlboroughacademy.org)

Email address:

[reception@marlboroughacademy.org](mailto:reception@marlboroughacademy.org)

# Dates for Diary

Tuesday 27<sup>th</sup> January - Widening Horizons Trip Year 5  
 Wednesday 28<sup>th</sup> January - International Lego day  
 Friday 30<sup>th</sup> January - Mufti day - cake donations please  
 Friday 6<sup>th</sup> February - NSPCC Number Day - Remember to take part in TTRS  
 Wednesday 11<sup>th</sup> February - Healthy Smiles are visiting our reception children  
 Friday 13<sup>th</sup> February - Valentine Disco  
 Friday 13<sup>th</sup> February - Break up for Half Term  
 Monday 23<sup>rd</sup> February - Maple class only - Open wide and step inside dental talk

## MARLBOROUGH PRIMARY SCHOOL 2025-26 TERM DATES

	September 25					October 25					November 25				December 25				
Monday	1	8	15	22	29	6	13	20	27	3	10	17	24	1	8	15	22	29	
Tuesday	2	9	16	23	30	7	14	21	28	4	11	18	25	2	9	16	23	30	
Wednesday	3	10	17	24		1	8	15	22	29	5	12	19	26	3	10	17	24	31
Thursday	4	11	18	25		2	9	16	23	30	6	13	20	27	4	11	18	25	
Friday	5	12	19	26		3	10	17	24	31	7	14	21	28	5	12	19	26	

	January 26					February 26				March 26					April 26				
Monday		5	12	19	26	2	9	16	23	2	9	16	23	30		6	13	20	27
Tuesday		6	13	20	27	3	10	17	24	3	10	17	24	31		7	14	21	28
Wednesday		7	14	21	28	4	11	18	25	4	11	18	25		1	8	15	22	29
Thursday	1	8	15	22	29	5	12	19	26	5	12	19	26		2	9	16	23	30
Friday	2	9	16	23	30	6	13	20	27	6	13	20	27		3	10	17	24	

	May 26					June 26					July 26					August 26				
Monday		4	11	18	25	1	8	15	22	29		6	13	20	27	3	10	17	24	31
Tuesday		5	12	19	26	2	9	16	23	30		7	14	21	28	4	11	18	25	
Wednesday		6	13	20	27	3	10	17	24		1	8	15	22	29	5	12	19	26	
Thursday		7	14	21	28	4	11	18	25		2	9	16	23	30	6	13	20	27	
Friday	1	8	15	22	29	5	12	19	26		3	10	17	24	31	7	14	21	28	